

# Stormwater Report for: TMR1005PI in the Town of Mattapoisett



end of Noyes Ave

### 2016 Massachusetts Integrated Listed Water

Discharge to tributary of Mattapoisett Harbor

MA95-35      Category 5 Estuary

Pollutants: Estuarine Bioassessments, Nutrient/Eutrophication  
Biological Indicators, Fecal Coliform

Sampling Parameters:    TN, Fecal

SNEP Project:  Yes

Urbanized:  Yes

Sewered:  No

No Flow Observations

#### Rating by Weather (0-5):

Wet :

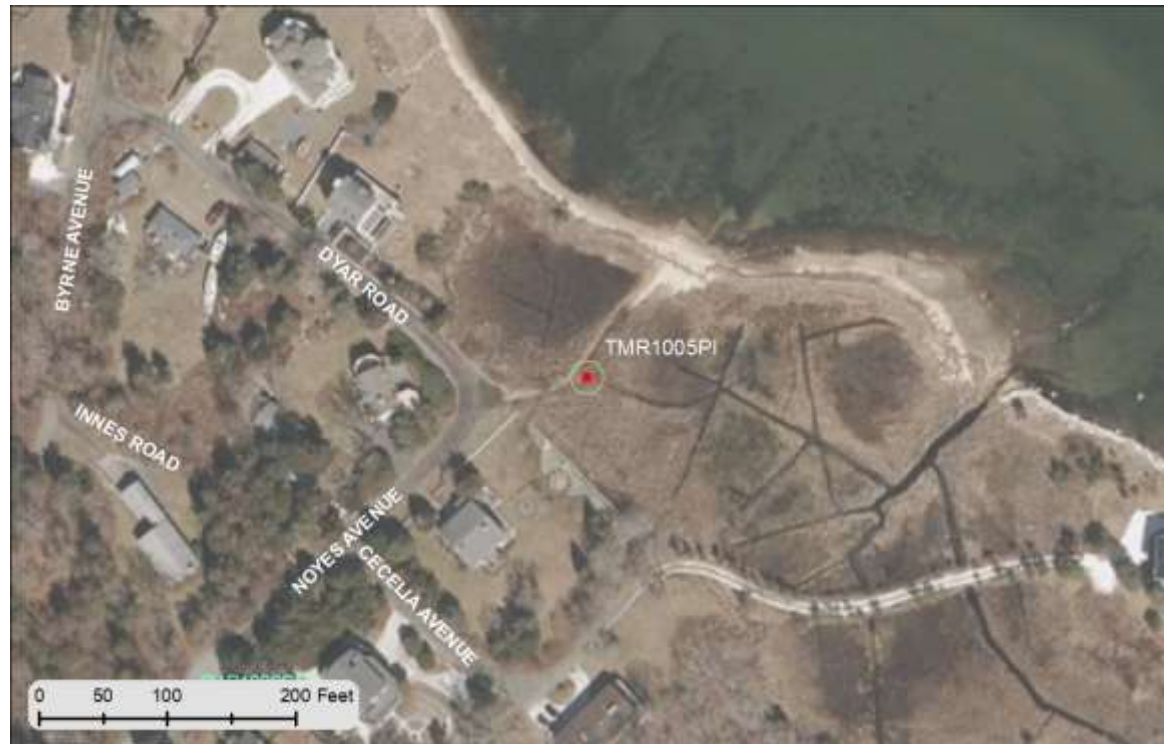
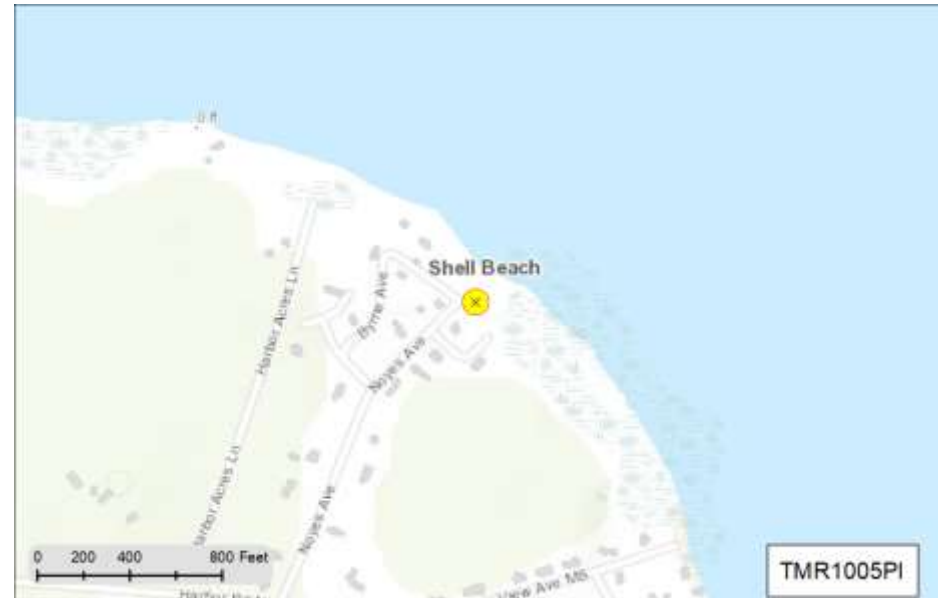
Dry :

Recommendation: Pipe:

DW no flow, no issues. WW: only 1 sample, Rank: Bact (2), Nitrate (1), Total 3. WW Recommend: Continue monitoring for WW. Matt Har Impair: Bact and N.

MS4 Ranking:

Status:



Status and Recommendation based on the opinion of the BBNEP.



# Stormwater Report for: TMR1007PI in the Town of Mattapoisett



end of Brandt Island Rd

### 2016 Massachusetts Integrated Listed Water

Discharge to tributary of Nasketucket Bay

MA95-65      Catagory 4A Estuary

Pollutants: Fecal Coliform

Sampling Parameters: Fecal

SNEP Project:  Yes

Urbanized:  Yes

Sewered:  No

No Flow Observations

#### Rating by Weather (0-5):

Wet :

Dry :



Recommnedation: Pipe:

DW Rank: (1 sample) Bact (1), Nitrates (1), Tot 2, however remaining DW samples no issues. WW: higher level of concern due to elevated Bact after rain. WW rank: Bact (2) Nitrates (1), Tot 3, Area not sewered, possible septic system problems. Recommend: Determine drainage area of stormdrain pipe, does TMR1001MH connect into TMR2216MH or does TMR1001MH discharge into woods. If MHs connected, monitor both MHs and stream, If not connected, monitor TMR2216MH and stream. Invest for potential ID (failed septic systems?). NB Impair: Bact

MS4 Ranking:

Status:





# Stormwater Report for: TMR1014PI in the Town of Mattapoisett



end of Brant Beach Ave



**2016 Massachusetts Integrated Listed Water**

Discharge directly to Nasketucket Bay

MA95-65    Catagory 4A Estuary

Pollutants: Fecal Coliform

Sampling Parameters: Fecal

SNEP Project:  Yes

Urbanized:  Yes

Sewered:  Yes

14 No Flow Observations

**Rating by Weather (0-5):**

Wet :

Dry :

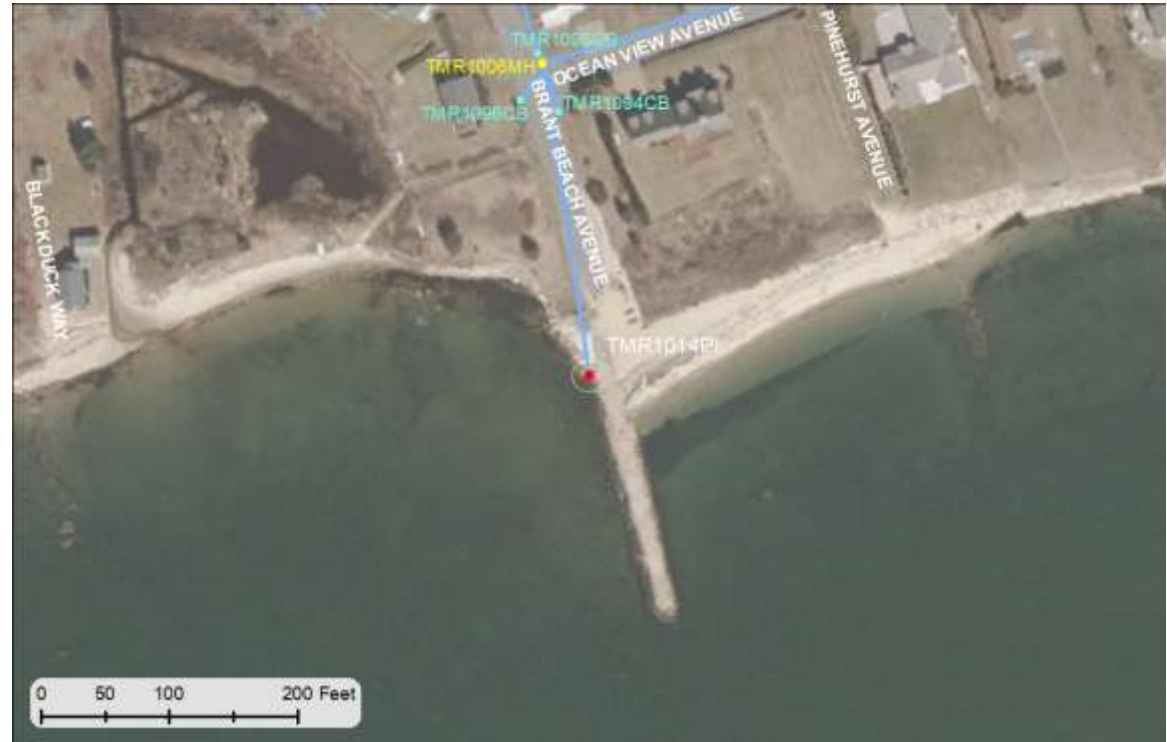


Recommendation: Pipe:

DW: No flow, no issues. WW: One day (2 samples), elevated in all parameters. WW: Rank Bact (2), Amm/Nitrates/Surf (1 ea), Tot 5. Recommend: continue WW samples and begin ID investigation. NB Impair: Bact

MS4 Ranking:

Status:





# Stormwater Report for: TMR1015PI in the Town of Mattapoisett



Anchorage Way

### 2016 Massachusetts Integrated Listed Water

Discharge to unlisted water of Buzzards Bay

Buzzards Bay

Pollutants: None Identified

Sampling Parameters: Fecal

SNEP Project:  No  
 Urbanized:  Yes  
 Sewered:

No Flow Observations

#### Rating by Weather (0-5):

Wet :   
 Dry :



Recommendation: Pipe:

MS4 Ranking:

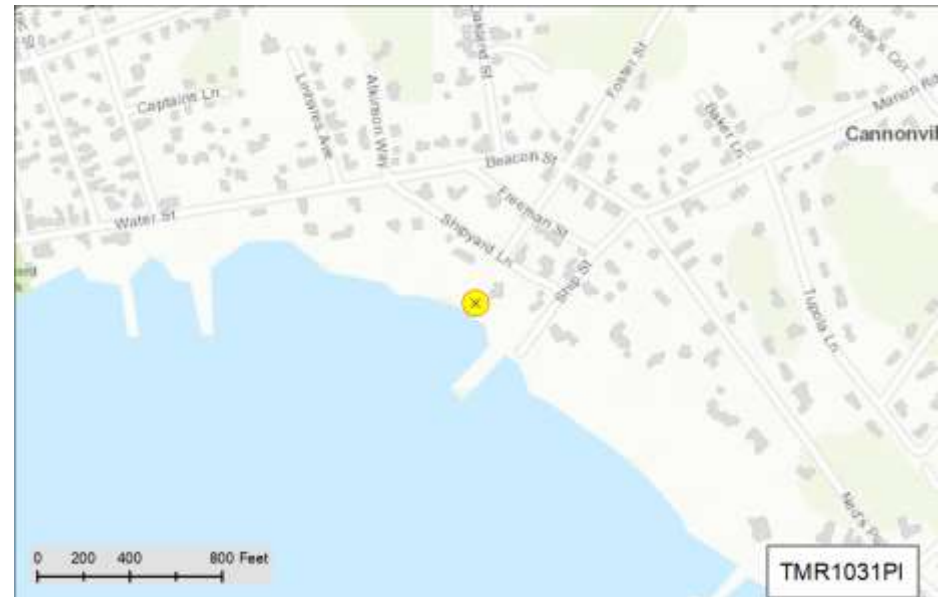
Status:







# Stormwater Report for: TMR1031PI in the Town of Mattapoisett



Shipyard Lane across from Foster St

**2016 Massachusetts Integrated Listed Water**

Discharge directly to Mattapoisett Harbor

MA95-35    Category 5 Estuary

Pollutants: Estuarine Bioassessments, Nutrient/Eutrophication  
Biological Indicators, Fecal Coliform

Sampling Parameters: TN, Fecal

SNEP Project:  Yes

Urbanized:  Yes

Sewered:  Yes

No Flow Observations

**Rating by Weather (0-5):**

Wet :

Dry :

Recommendation: Pipe:

1CB with 2 DP (TMR1031PI) and (TMR1274PI). Probably TMR1031PI replaced TMR1274PI. DW rank: Bact (1), Amm, Nitrates, Surf (1 ea), Total 4. WW Rank (1 sample) Bact (2), Amm/Nitrates/Surf (1 ea), Tot. 5. Recommend: Continue DW and WW monitoring. If collecting a DW sample in sump, make note in data sheet if the sump is flowing (not stagnant). Investigate stormdrain for potential ID .  
Matt Har Impair: Bact and N

MS4 Ranking:

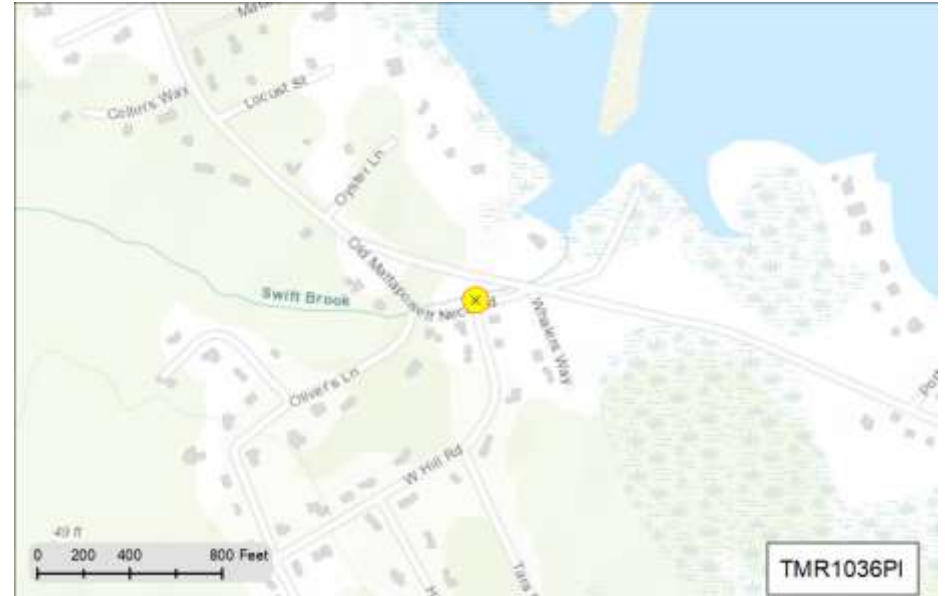
Status:



Status and Recommendation based on the opinion of the BBNEP.



# Stormwater Report for: TMR1036PI in the Town of Mattapoisett



Old Mattapoisett Neck Road

**2016 Massachusetts Integrated Listed Water**

Discharge to tributary of Mattapoisett River

MA95-60      Catagory 4A Estuary

Pollutants: Fecal Coliform

Sampling Parameters: Fecal

SNEP Project:  Yes  
 Urbanized:  Yes  
 Sewered:  No



No Flow Observations

**Rating by Weather (0-5):**

Wet :   
 Dry :

Recommendation: Pipe:

DW: Although there are 2 no flow DW observations, there are some dry weather discharges indicating potential ID. DW Rank: Bact (1), Nitrates, Surf (1 ea), Tot. 4. WW: (2 samples with moderate to high Bact. Also one stream sample near the pipe with also high levels of Bact. WW Rank Bact (2), Amm, Nitrates, Surf (1 ea) Total 5. Recommend: Investigate for potential ID. Continue DW and WW monitoring. Any DW sump sample indicate if sump is flowing (not stagnant). Matt Har Impair: Bact and N

MS4 Ranking:

Status:





# Stormwater Report for: TMR1039PI in the Town of Mattapoisett



Water St across from playground

## 2016 Massachusetts Integrated Listed Water

Discharge directly to Mattapoisett Harbor

MA95-35 Category 5 Estuary

Pollutants: Estuarine Bioassessments, Nutrient/Eutrophication Biological Indicators, Fecal Coliform

Sampling Parameters: TN, Fecal

SNEP Project:  Yes

Urbanized:  Yes

Sewered:  Yes

0 No Flow Observations



### Rating by Weather (0-5):

Wet :

Dry :

Recommendation: Pipe:

The drainage on this site is complicated, 2 drainage systems into 1 discharge, one system, stormwater from North and Water St flows through an infiltration treatment BMP. The other system drains some of Water Street, plus the drainage ditch north of Water Street. DW: All pipe samples indicate a moderate Bact count. DW Rank: Bact (1) Nitrates/Surf (1 ea), Tot. 3. WW: 1 Sample at pipe high for Bact. WW Rank: Bact (2), Nitrates/Surf (1 ea), Tot. 4. Recommend: Continue to monitor pipe in free-flowing conditions, monitor TMR1260CB and TMR1262CB as stormwater flows in off Water Street (not inside the CB, but at the street level), and monitor TMR1018MH (the BMP bypass) and TMR1022MH. All these

MS4 Ranking:

Status:



Status and Recommendation based on the opinion of the BBNEP.



# Stormwater Report for: TMR1040RC in the Town of Mattapoisett



Mattapoisett Neck Rd

### 2016 Massachusetts Integrated Listed Water

Discharge to tributary of Mattapoisett Harbor

MA95-35      Category 5 Estuary

Pollutants: Estuarine Bioassessments, Nutrient/Eutrophication  
Biological Indicators, Fecal Coliform

Sampling Parameters: TN, Fecal

SNEP Project:  Yes

Urbanized:  Yes

Sewered:  No

No Flow Observations

#### Rating by Weather (0-5):

Wet :

Dry :

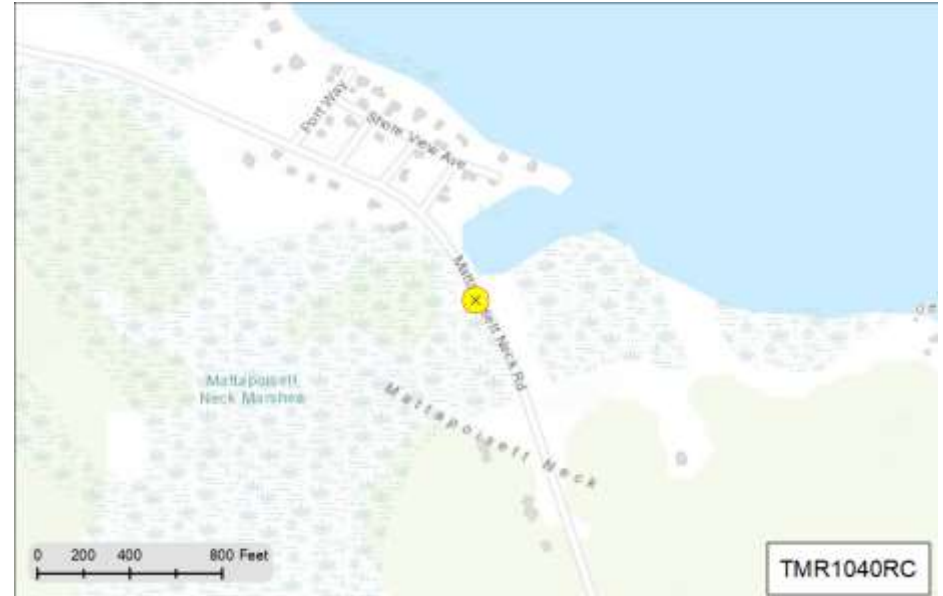


Recommendation: Pipe:

No Samples. Recommend: Collect WW samples for evaluation.  
Matt Har Impair: Bact and N

MS4 Ranking:

Status:







# Stormwater Report for: TMR1041PI in the Town of Mattapoisett



Water St opposite Mechanic St



**2016 Massachusetts Integrated Listed Water**

Discharge directly to Mattapoisett Harbor

MA95-35    Category 5 Estuary

Pollutants: Estuarine Bioassessments, Nutrient/Eutrophication  
Biological Indicators, Fecal Coliform

Sampling Parameters: TN, Fecal

SNEP Project:  Yes

Urbanized:  Yes

Sewered:  Yes

0 No Flow Observations

**Rating by Weather (0-5):**

Wet :

Dry :

Recommendation: Pipe:

DW: Low to moderate Bact counts, DW Rank: Bact (1), Nitrates (1), Tot 2. WW: High Bact counts, WW Rank: Bact (2), Nitrates (1), Tot. 3. Recommend: Continue WW monitoring. Matt Har Impair: Bact and N

MS4 Ranking:

Status:



Status and Recommendation based on the opinion of the BBNEP.



# Stormwater Report for: TMR1043RC in the Town of Mattapoisett



Mattapoisett Neck Rd

### 2016 Massachusetts Integrated Listed Water

Discharge to tributary of Mattapoisett Harbor

MA95-35      Catagory 5 Estuary

Pollutants: Estuarine Bioassessments, Nutrient/Eutrophication  
Biological Indicators, Fecal Coliform

Sampling Parameters:    TN, Fecal

SNEP Project:  Yes

Urbanized:  Yes

Sewered:  No

No Flow Observations

#### Rating by Weather (0-5):

Wet :

Dry :



Recommendation: Pipe:

WW Rank (1 sample) Bact (1), Nitrates/Surf (1 ea). Tot. 3.  
Recommend: Investigate drainage area including surface flows onto  
Matt Neck Rd. Continue monitoring WW. Matt Har Impair: Bact and  
N

MS4 Ranking:

Status:





# Stormwater Report for: TMR1044PI in the Town of Mattapoisett



Water St

### 2016 Massachusetts Integrated Listed Water

Discharge directly to Mattapoisett Harbor

MA95-35 Category 5 Estuary

Pollutants: Estuarine Bioassessments, Nutrient/Eutrophication  
Biological Indicators, Fecal Coliform

Sampling Parameters: TN, Fecal

SNEP Project:  Yes  
Urbanized:  Yes  
Sewered:  Yes

0 No Flow Observations

#### Rating by Weather (0-5):

Wet :  No Data  
Dry :  3

Recommendation: Pipe:

DW rank (3 pipe samples): Bact (1) and Nitrates/Surf (1 ea), Total 3.  
WW Rank (1 Sample) Nitrates/Surf (1 ea), Total 3. Recommend:  
continue to monitor DW and WW. Matt Har Impair: Bact and N

MS4 Ranking:  High Priority Outfall

Status:  Evaluation Not Complete





# Stormwater Report for: TMR1050PI in the Town of Mattapoisett



Main St just before Pearl St at bend



## 2016 Massachusetts Integrated Listed Water

Discharge directly to Mattapoisett Harbor

MA95-35 Category 5 Estuary

Pollutants: Estuarine Bioassessments, Nutrient/Eutrophication  
Biological Indicators, Fecal Coliform

Sampling Parameters: TN, Fecal

SNEP Project:  Yes

Urbanized:  Yes

Sewered:  Yes

No Flow Observations

### Rating by Weather (0-5):

Wet :

Dry :

Recommendation: Pipe:

DW no flow, no issues. Recommend: Collect WW samples for evaluation (no samples taken). Matt Har Impair: Bact and N

MS4 Ranking:

Status:



Status and Recommendation based on the opinion of the BBNEP.





# Stormwater Report for: TMR1058PI in the Town of Mattapoisett



Main St

### 2016 Massachusetts Integrated Listed Water

Discharge directly to Eel Pond

MA95-61 Category 5 Estuary

Pollutants: Nutrient/Eutrophication Biological Indicators, Fecal Coliform

Sampling Parameters: TN, Fecal

SNEP Project:  Yes  
 Urbanized:  Yes  
 Sewered:  Yes

No Flow Observations

#### Rating by Weather (0-5):

Wet :   
 Dry :



Recommendation: Pipe:

DW, No flow, no issues. WW (1 sample) Rank: Bact (2), Nitrates/Surf (1 ea) Total 4. Investigate for potential ID. Recommend: Continue to monitor during WW. Matt Har Impair: Bact and N

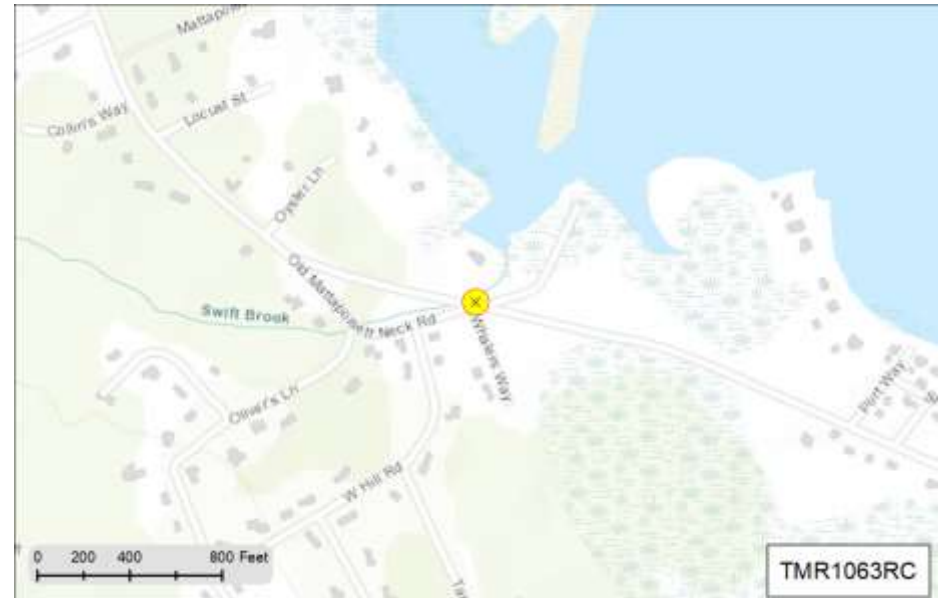
MS4 Ranking:

Status:





# Stormwater Report for: TMR1063RC in the Town of Mattapoisett



Mattapoisett Neck Rd

**2016 Massachusetts Integrated Listed Water**

Discharge to tributary of Mattapoisett River

MA95-60      Catagory 4A Estuary

Pollutants: Fecal Coliform

Sampling Parameters: Fecal

SNEP Project:  Yes  
 Urbanized:  Yes  
 Sewered:  No

No Flow Observations

**Rating by Weather (0-5):**

Wet :   
 Dry :



Recommnedation: Pipe:

DW: no flow, no issues (RC). WW (1 sample) Bact (1), Nitrates/Surfactants (1 ea), Total 3. Recommend: Continue monitoring WW. Make note of contributing watershed flows as this may be a potential ID. Matt R Impair: Bact

MS4 Ranking:

Status:



Status and Recommendation based on the opinion of the BBNEP.



# Stormwater Report for: TMR1064RC in the Town of Mattapoisett



Mattapoisett Neck Rd and Whalers Way

### 2016 Massachusetts Integrated Listed Water

Discharge to tributary of Mattapoisett River

MA95-60      Category 4A Estuary

Pollutants: Fecal Coliform

Sampling Parameters: Fecal

SNEP Project:  Yes

Urbanized:  Yes

Sewered:  No

No Flow Observations

#### Rating by Weather (0-5):

Wet :

Dry :

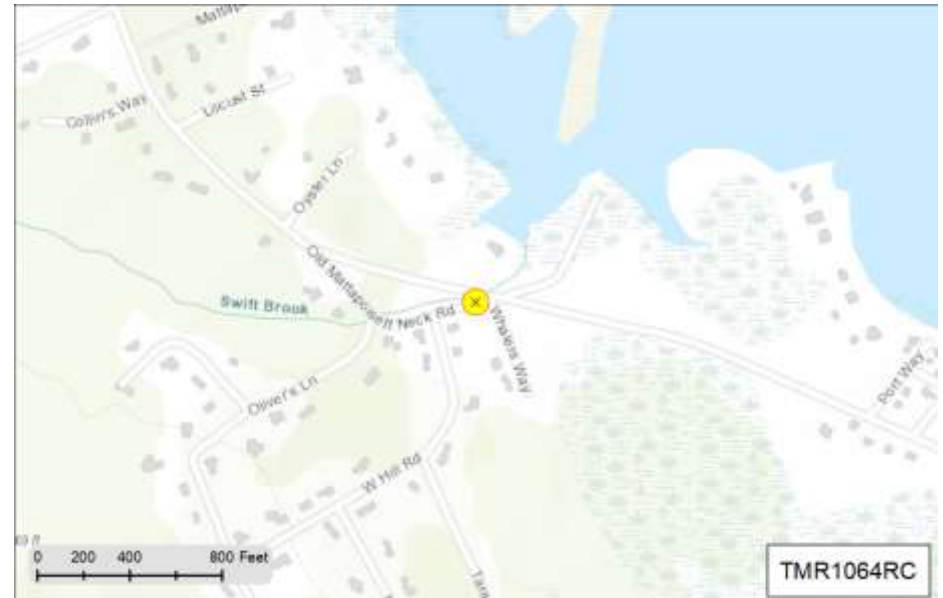


Recommendation: Pipe:

DW: no flow, no issues (RC). WW (1 sample) Bact (1), Nitrates/Surfactants (1 ea), Total 3. Recommend: Continue monitoring WW. Make note of contributing watershed flows as this may be a potential ID. Matt R Impair: Bact

MS4 Ranking:

Status:



Status and Recommendation based on the opinion of the BBNEP.



# Stormwater Report for: TMR1067PI in the Town of Mattapoisett



Fairhaven Rd

### 2016 Massachusetts Integrated Listed Water

Discharge to tributary of Eel Pond

MA95-61 Category 5 Estuary

Pollutants: Nutrient/Eutrophication Biological Indicators, Fecal Coliform

Sampling Parameters: TN, Fecal

SNEP Project:  Yes

Urbanized:  Yes

Sewered:  Yes

No Flow Observations

#### Rating by Weather (0-5):

Wet :

Dry :

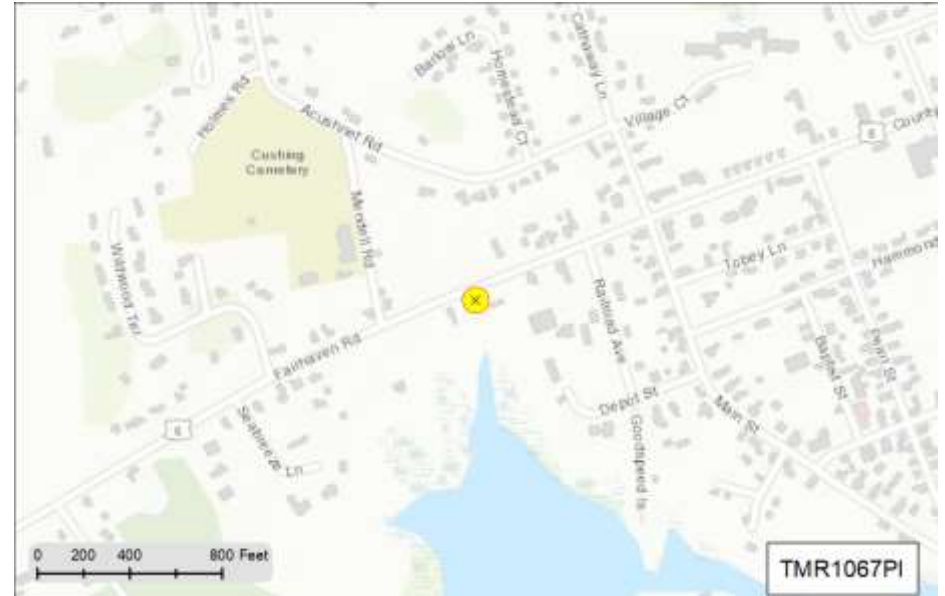


Recommendation: Pipe:

Although there were 3 DW, no flows, there was 1 DW sample that had some flow with moderate levels of bacteria. Recommend continued sampling. DW only monitoring when flow is evident (not stagnant). If not flowing make a note on data sheets. In conjunction with monitoring TMR1067PI, monitor TMR1068PI and TMR1070PI consecutively. Begin investigating for sources of bacteria and potential ID especially from town drainage. Notify Mass DOT of monitoring and investigative results.

MS4 Ranking:

Status:







# Stormwater Report for: TMR1068PI in the Town of Mattapoisett



Fairhaven Road

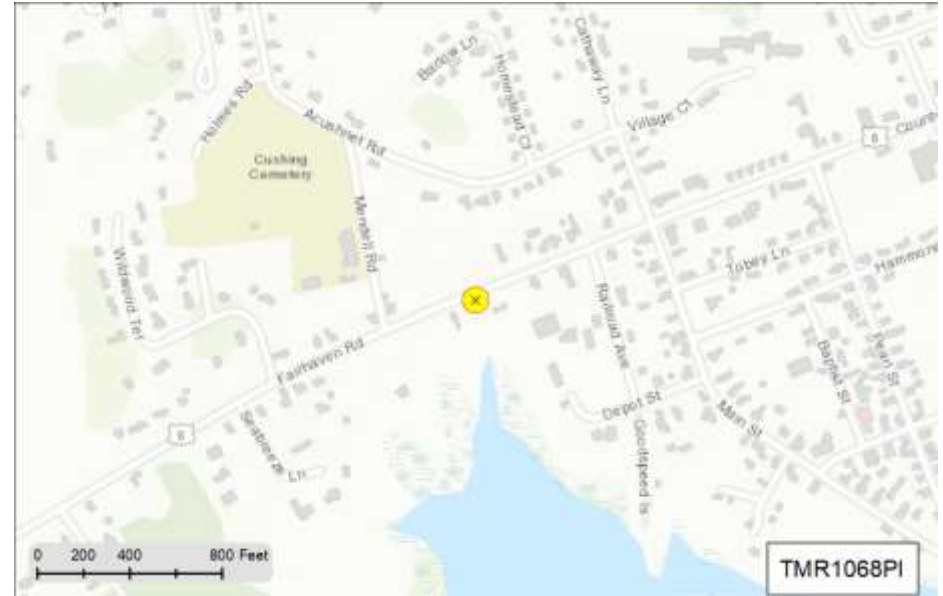
### 2016 Massachusetts Integrated Listed Water

Discharge to tributary of Eel Pond

MA95-61 Category 5 Estuary

Pollutants: Nutrient/Eutrophication Biological Indicators, Fecal Coliform

Sampling Parameters: TN, Fecal



SNEP Project:  No  
 Urbanized:  Yes  
 Sewered:

No Flow Observations

#### Rating by Weather (0-5):

Wet :

Dry :



Recommendation: Pipe:

MS4 Ranking:

Status:



Status and Recommendation based on the opinion of the BBNEP.



# Stormwater Report for: TMR1070PI in the Town of Mattapoisett



Fairhaven Road

**2016 Massachusetts Integrated Listed Water**

Discharge to tributary of Eel Pond

MA95-61 Category 5 Estuary

Pollutants: Nutrient/Eutrophication Biological Indicators, Fecal Coliform

Sampling Parameters: TN, Fecal

SNEP Project:  No  
Urbanized:  Yes  
Sewered:

0 No Flow Observations

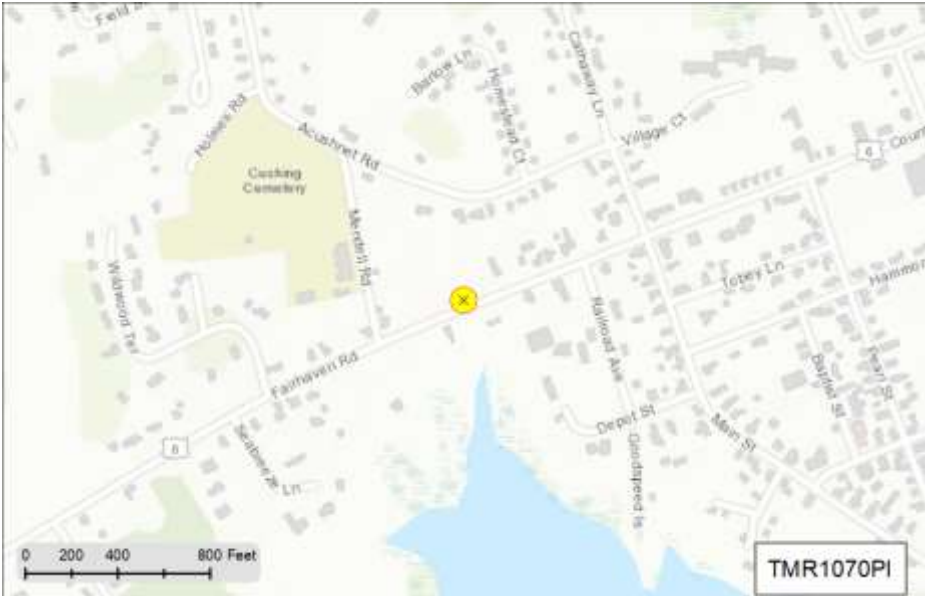
**Rating by Weather (0-5):**  
Wet :   
Dry :



Recommendation: Pipe:

MS4 Ranking:

Status:



Status and Recommendation based on the opinion of the BBNEP.



**Stormwater Report for: TMR1076PI**  
**in the Town of Mattapoissett**



Mendell Road

**2016 Massachusetts Integrated Listed Water**

Discharge to tributary of Eel Pond

MA95-61      Category 5 Estuary

Pollutants: Nutrient/Eutrophication Biological Indicators, Fecal Coliform

Sampling Parameters: TN, Fecal

SNEP Project:  No  
 Urbanized:  Yes  
 Sewered:   
 0 No Flow Observations

**Rating by Weather (0-5):**  
 Wet :   
 Dry :



Recommendation: Pipe:

MS4 Ranking:   
 Status:



Status and Recommendation based on the opinion of the BBNEP.



# Stormwater Report for: TMR1077PI in the Town of Mattapoisett



Acushnet Road

### 2016 Massachusetts Integrated Listed Water

Discharge to tributary of Eel Pond

MA95-61  Category 5 Estuary

Pollutants: Nutrient/Eutrophication Biological Indicators, Fecal Coliform

Sampling Parameters:  TN, Fecal

SNEP Project:  No  
 Urbanized:  Yes  
 Sewered:

0 No Flow Observations

#### Rating by Weather (0-5):

Wet :  3

Dry :  3



Recommendation: Pipe:  Circular 48 inch Concrete

MS4 Ranking:

Status:







# Stormwater Report for: TMR1080PI in the Town of Mattapoisett



Fairhaven Rd

### 2016 Massachusetts Integrated Listed Water

Discharge directly to Mattapoisett River

MA95-60      Category 4A Estuary

Pollutants: Fecal Coliform

Sampling Parameters: Fecal

SNEP Project:  Yes

Urbanized:  Yes

Sewered:  No

No Flow Observations

#### Rating by Weather (0-5):

Wet :

Dry :

Recommendation: Pipe:

DW no flow, no issues. WW (2 samples) Rank: Bact (2), Amm/Nitrates/Surf (1 ea), Total 5. Recommend: Continue monitoring for WW. Begin investigating for sources of bacteria and potential ID especially from town drainage. Monitor consecutively with TMR1082PI. Notify Mass DOT of monitoring and investigative results. Matt R Impair: Bact

MS4 Ranking:

Status:



Status and Recommendation based on the opinion of the BBNEP.



# Stormwater Report for: TMR1082PI in the Town of Mattapoisett



Fairhaven Rd opposite River Rd

**2016 Massachusetts Integrated Listed Water**

Discharge directly to Mattapoisett River

MA95-60    Category 4A Estuary

Pollutants: Fecal Coliform

Sampling Parameters:

SNEP Project:

Urbanized:

Sewered:

No Flow Observations

**Rating by Weather (0-5):**

Wet :

Dry :

Recommendation: Pipe:

DW no flow, no issues. WW (2 samples) Rank: Bact 2, Amm/Nitrates/Surf (1 ea), Total 5. Begin investigating for sources of bacteria and potential ID especially from town drainage. Monitor consecutively with TMR1080PI. Notify Mass DOT of monitoring and investigative results. Matt R Impair: Bact

MS4 Ranking:

Status:



Status and Recommendation based on the opinion of the BBNEP.



# Stormwater Report for: TMR1088PI in the Town of Mattapoisett



Shaw St at end of residential houses

### 2016 Massachusetts Integrated Listed Water

Discharge directly to Mattapoisett River

MA95-36 Category 5 River

Pollutants: Enterococcus, Escherichia Coli (E. Coli)

Sampling Parameters: Ecoli, Entero

SNEP Project:  Yes

Urbanized:  Yes

Sewered:  Yes

No Flow Observations

#### Rating by Weather (0-5):

Wet :

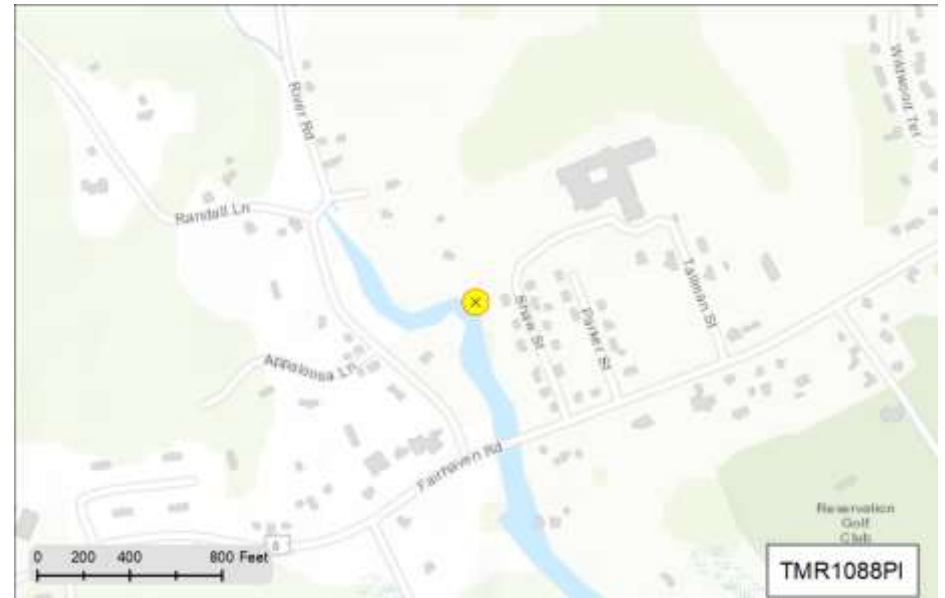
Dry :

Recommendation: Pipe:

DW no flow, no issues. WW (2 pipe samples) Rank: Bact (1), Amm/Nitrates (1 ea), Total 3. Recommend: Continue monitoring in WW to confirm presence of ID and consider potential BMP for bact. Matt R Impair: Bact

MS4 Ranking:

Status:





# Stormwater Report for: TMR1092PI in the Town of Mattapoisett



Park Street

### 2016 Massachusetts Integrated Listed Water

Discharge to tributary of Eel Pond

MA95-61  Category 5 Estuary

Pollutants: Nutrient/Eutrophication Biological Indicators, Fecal Coliform

Sampling Parameters:  TN, Fecal

SNEP Project:  No

Urbanized:  Yes

Sewered:

0 No Flow Observations

#### Rating by Weather (0-5):

Wet :  3

Dry :  3



Recommendation: Pipe:  Circular 2 36 inch Concrete

MS4 Ranking:

Status:







# Stormwater Report for: TMR1094PI in the Town of Mattapoisett



Park Street

**2016 Massachusetts Integrated Listed Water**

Discharge to watershed of Eel Pond

MA95-61    Category 5 Estuary

Pollutants: Nutrient/Eutrophication Biological Indicators, Fecal Coliform

Sampling Parameters:

SNEP Project:

Urbanized:

Sewered:

No Flow Observations

**Rating by Weather (0-5):**

Wet :

Dry :



Recommendation: Pipe:

MS4 Ranking:

Status:



Status and Recommendation based on the opinion of the BBNEP.



# Stormwater Report for: TMR1117RC in the Town of Mattapoisett



Park Street

### 2016 Massachusetts Integrated Listed Water

Discharge to tributary of Eel Pond

MA95-61  Category 5 Estuary

Pollutants: Nutrient/Eutrophication Biological Indicators, Fecal Coliform

Sampling Parameters:  TN, Fecal

SNEP Project:  No  
 Urbanized:  Yes  
 Sewered:

0 No Flow Observations

#### Rating by Weather (0-5):

Wet :  4

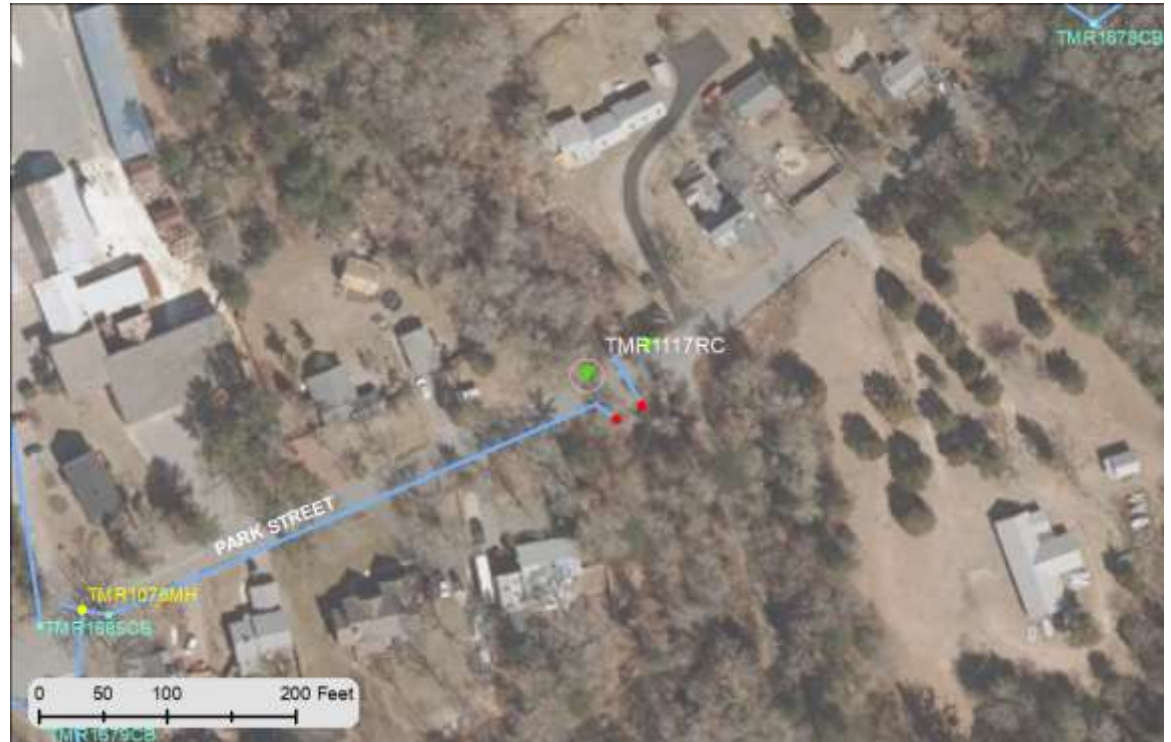
Dry :  No Data or No Flow



Recommendation: Pipe:

MS4 Ranking:

Status:





**Stormwater Report for: TMR1271PI  
in the Town of Mattapoisett**



West Hill Rd opposite Tara Rd

**2016 Massachusetts Integrated Listed Water**

Discharge to unlisted water of Buzzards Bay

Buzzards Bay

Pollutants: None Identified

Sampling Parameters:

SNEP Project:

Urbanized:

Sewered:

No Flow Observations

**Rating by Weather (0-5):**

Wet :

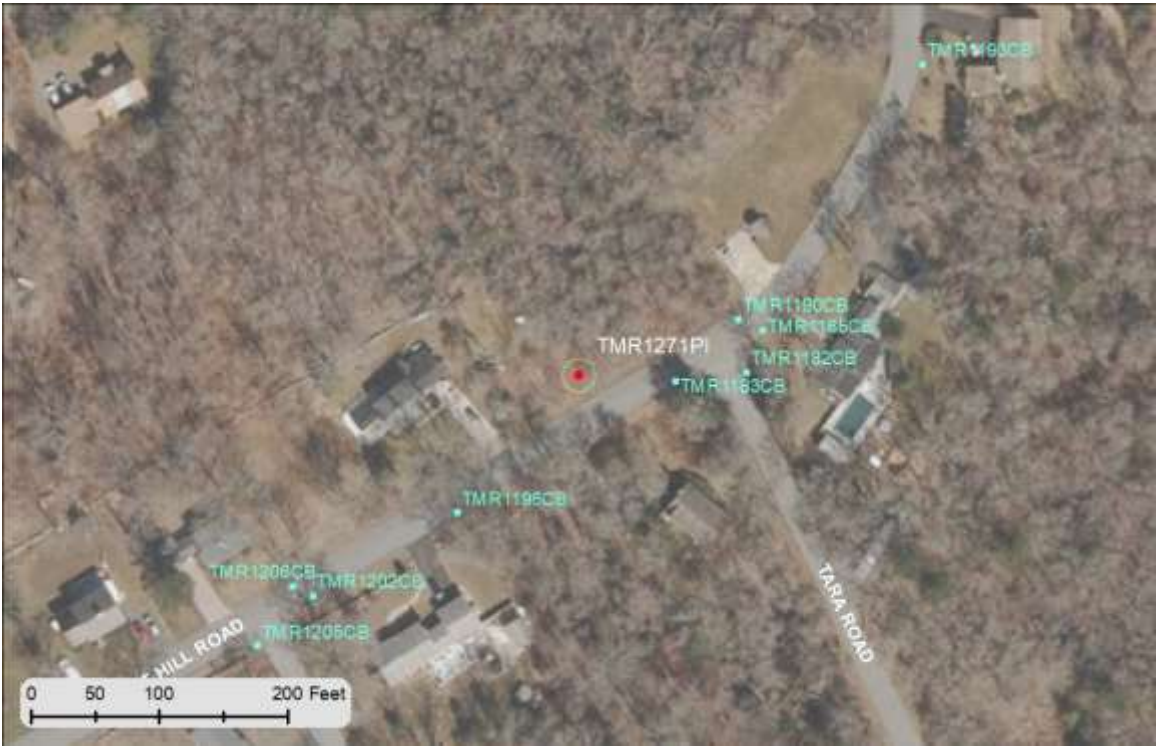
Dry :

Recommendation: Pipe:

This discharge should not been part of the monitoring program. Not sure if the pipe is actually located in this area or does it flow to TMR1036PI

MS4 Ranking:

Status:



Status and Recommendation based on the opinion of the BBNEP.



# Stormwater Report for: TMR1272PI in the Town of Mattapoisett



end of Bay View Ave

**2016 Massachusetts Integrated Listed Water**

Discharge to tributary of Mattapoisett Harbor

MA95-35      Category 5 Estuary

Pollutants: Estuarine Bioassessments, Nutrient/Eutrophication  
Biological Indicators, Fecal Coliform

Sampling Parameters:    TN, Fecal

SNEP Project:  Yes  
Urbanized:     Yes  
Sewered:       No

No Flow Observations

**Rating by Weather (0-5):**  
Wet :   
Dry :

Recommendation:    Pipe:

Although most of these samples were in the CBs sumps, the data indicates the presence of an ID and should be investigated. DW Bact ranged from moderate to high and surfactants over the testing capabilities. Comments in the data sheets referred to the water as gray in color. DW Rank: Bact (2), Amm/Surf (1 ea). Total 4. WW Rank: Bact (2), Amm/Nitrates/Surf (1 ea), Total 5. Recommend: Investigate for potential ID connection including any failed septic systems. Matt Har Impair: Bact and N

MS4 Ranking:

Status:



Status and Recommendation based on the opinion of the BBNEP.





# Stormwater Report for: TMR1273PI in the Town of Mattapoisett



Neds Point Rd

### 2016 Massachusetts Integrated Listed Water

Discharge to watershed of Mattapoisett Harbor

MA95-35 Category 5 Estuary

Pollutants: Estuarine Bioassessments, Nutrient/Eutrophication  
Biological Indicators, Fecal Coliform

Sampling Parameters: TN, Fecal

SNEP Project:  Yes

Urbanized:  Yes

Sewered:  Yes



No Flow Observations

#### Rating by Weather (0-5):

Wet :

Dry :

Recommendation: Pipe:

Although there were 2 no flow events, there were also 3 samples with water flowing during dry events, one of which had moderate levels of bact. DW rank: Bact (1), Surf (1), Total 2. WW Rank (1 sample): Bact (1), Nitrates/Surf (1 ea), Total 3. Recommend: Continue monitoring for DW and WW. Matt Har Impair: Bact and N

MS4 Ranking:

Status:



Status and Recommendation based on the opinion of the BBNEP.



# Stormwater Report for: TMR1274PI in the Town of Mattapoisett



Shipyard Lane across from Foster St



**2016 Massachusetts Integrated Listed Water**

Discharge directly to Mattapoisett Harbor

MA95-35    Category 5 Estuary

Pollutants: Estuarine Bioassessments, Nutrient/Eutrophication  
Biological Indicators, Fecal Coliform

Sampling Parameters:    TN, Fecal

SNEP Project:  Yes

Urbanized:     Yes

Sewered:       Yes

3 No Flow Observations

**Rating by Weather (0-5):**

Wet :  No Data

Dry :     2

Recommendation:    Pipe:

There are two pipes in close proximity (TMR1031PI). Check TMR1174CB as this may not be a functioning pipe, replaced by TMR1031PI? Follow recommendations for TMR1031PI - Recommend: Continue DW and WW monitoring. If collecting a DW sample in sump, make note in data sheet if the sump is flowing (not stagnant). Investigate stormdrain for potential ID . Matt Har Impair: Bact and N.

MS4 Ranking:     High Priority Outfall

Status:     Some Concern Warranted - Continue Monitoring



Status and Recommendation based on the opinion of the BBNEP.



# Stormwater Report for: TMR1284PI in the Town of Mattapoisett



Park Street

### 2016 Massachusetts Integrated Listed Water

Discharge to tributary of Eel Pond

MA95-61  Category 5 Estuary

Pollutants: Nutrient/Eutrophication Biological Indicators, Fecal Coliform

Sampling Parameters:  TN, Fecal

SNEP Project:  No

Urbanized:  Yes

Sewered:

0 No Flow Observations

#### Rating by Weather (0-5):

Wet :  3

Dry :  No Data or No Flow



Recommendation: Pipe:  Circular 10 inch Concrete

MS4 Ranking:

Status:



