



# **Main Street/Water Street/ Beacon Street/Marion Road Reconstruction Project**

**July 12, 2022**

HIGHWAY GUARD DETAILS

NONE

TRAFFIC SIGNAL CONDUIT

SEE PLAN SHEET NO. 72

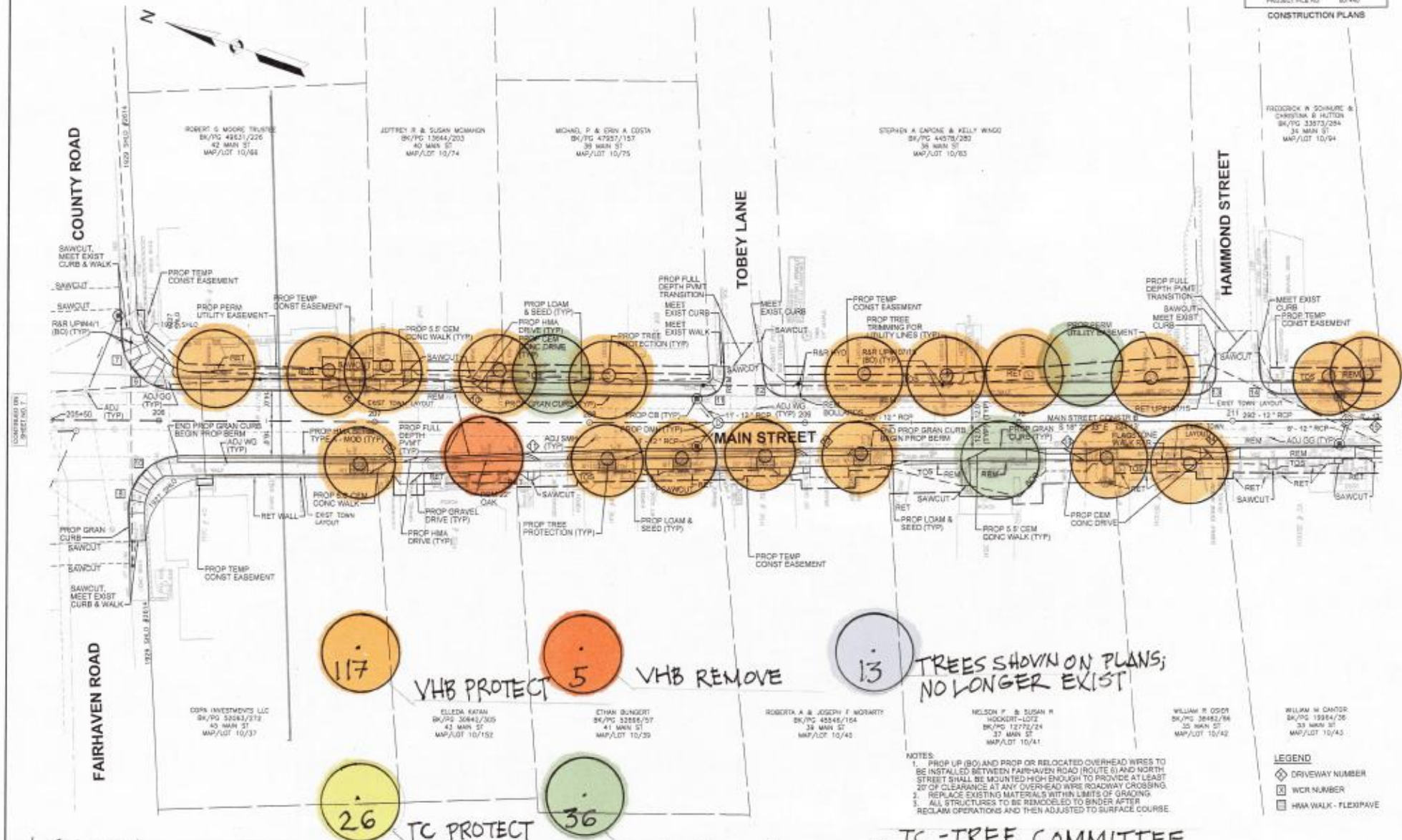
WATER SUPPLY ALTERATIONS

SEE BELOW

DRAINAGE DETAILS

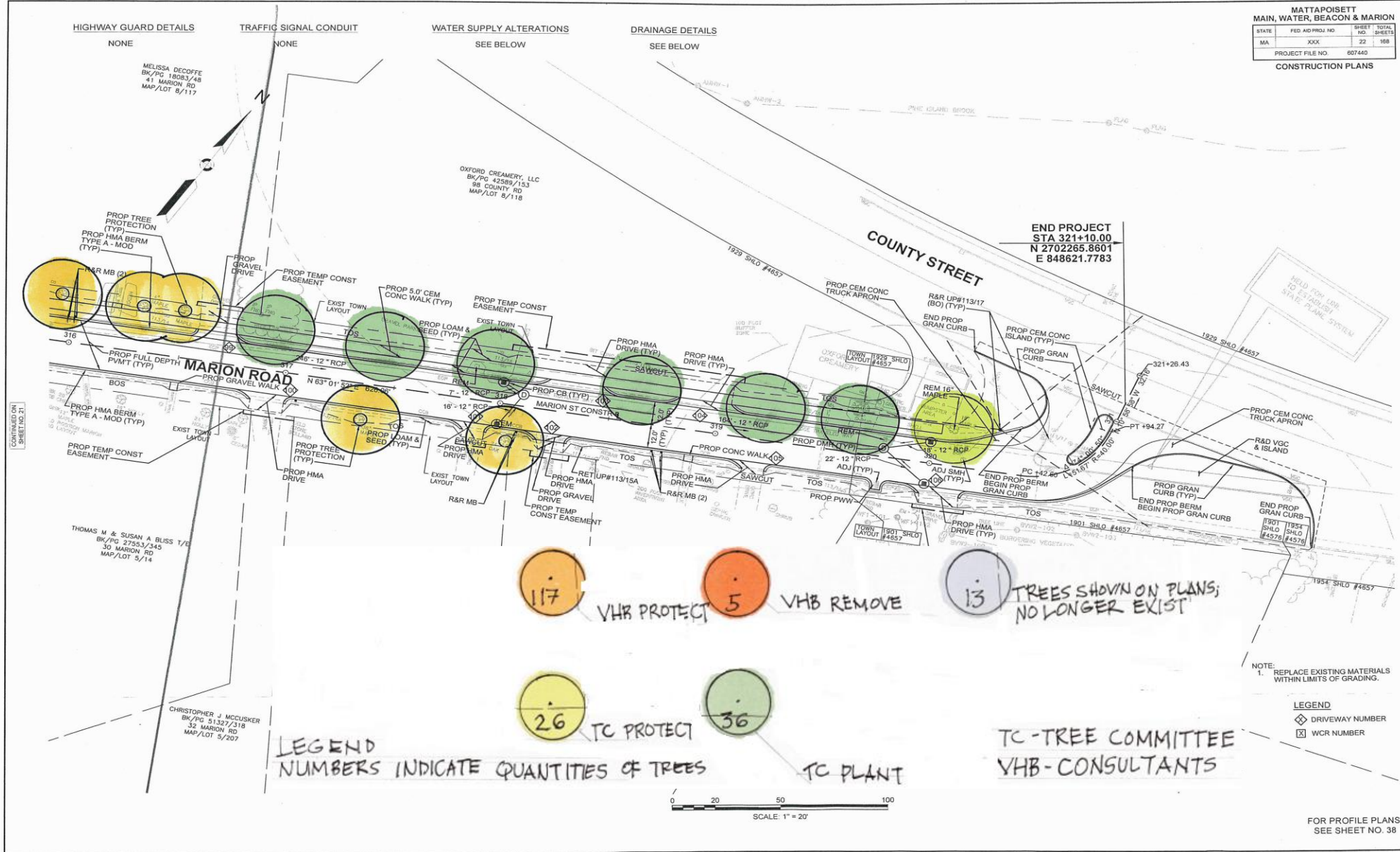
SEE BELOW

| MATTAPoisSETT<br>MAIN, WATER, BEACON & MARION |                  |           |              |
|---|------------------|-----------|--------------|
| STATE   | FED AID PROJ NO. | SHEET NO. | TOTAL SHEETS |
| MA  | XXX              | 8         | 100          |
| PROJECT FILE NO.                              |                  | 807440    |              |
| CONSTRUCTION PLANS                            |                  |           |              |



DATE: 10/10/10  
BY: [Signature]  
CHECKED BY: [Signature]  
SCALE: 1" = 20'

FOR PROFILE PLANS:  
SEE SHEET NO. 24



MATTAPOISETT  
MAIN, WATER, BEACON & MARION

| STATE            | FED AID PROJ NO | SHEET NO | TOTAL SHEETS |
|------------------|-----------------|----------|--------------|
| MA               | XXX             | 22       | 108          |
| PROJECT FILE NO. |                 | 607440   |              |

CONSTRUCTION PLANS

607440.dwg - JCHEN.DWG  
Plotted on: 20-Mar-2021 2:33 PM

# Economic Value

- Trees increase the selling price of homes by as much as 15%
- Shade trees can reduce the aging of road and paving surfaces
- Trees reduce energy costs
- Trees attract visitors and are good for business
- Cost of removal of large street trees is \$2000-\$5000 each



# Environmental Value

- Trees:
  - reduce stormwater flow and mitigate flooding
  - improve air quality
  - reduce impact of wind
  - mitigate noise
  - support wildlife
  - absorb harmful greenhouse gases
- Tree cover lowers daytime temperatures by as much as 10-15 degrees



<https://masstreewardens.org/wp-content/uploads/Trees-and-Roads-1.pdf>

<https://weatherspark.com/y/26789/Average-Weather-in-Mattapoisett-Center-Massachusetts-United-States-Year-Round>

<https://www.arboday.org/trees/treefacts>

<https://greenpop.org/10-environmental-benefits-planting-tree/>

# Social Impact

- Trees have a calming effect on people and help reduce stress and anxiety
- Add to town character and identity
- Provide background to compliment our municipal and residential buildings
- Contribute to traffic calming



<https://www.treehuggersbracelets.com/blogs/our-blog/6-reasons-why-trees-are-so-important-to-the-environment>  
[https://depts.Washington.edu/Thm\\_SafeStreets.html](https://depts.Washington.edu/Thm_SafeStreets.html)



# Village Center

- Community center
- Gathering place
- Boat launching
- Eating
- Music
- Car night
- Town beach



# Village Center





# Recommendations

- Implement robust tree protection design and construction
- Integrate tree planting into street reconstruction project
- Enhance village center
- Future involvement
  - Community meetings
  - Involved in meetings with VHB and the Town

